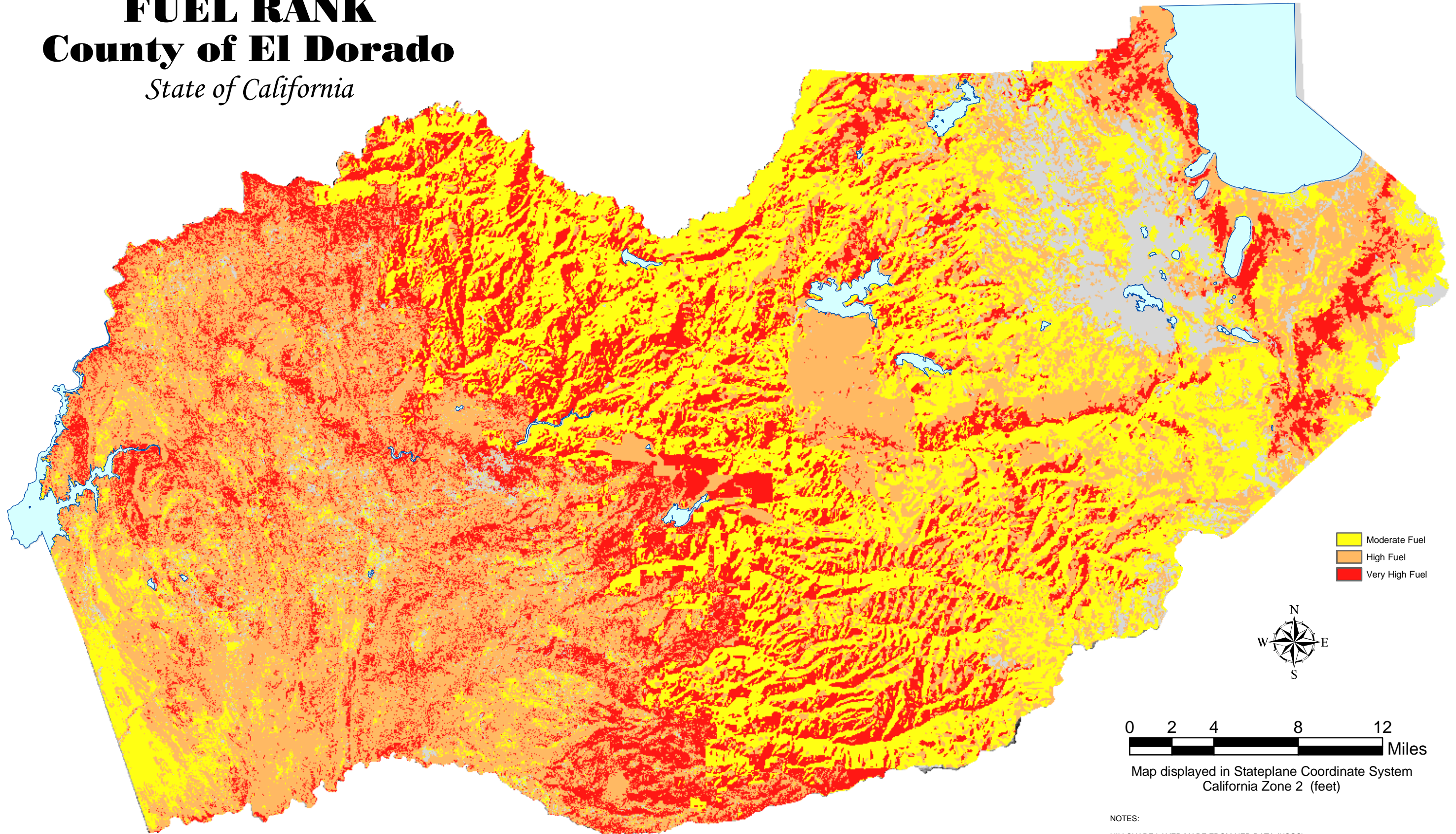


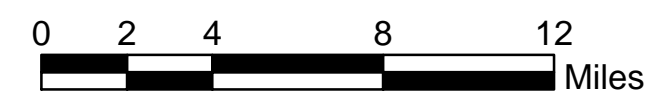
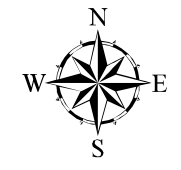
# FUEL RANK

## County of El Dorado

*State of California*



- Moderate Fuel
- High Fuel
- Very High Fuel



Map displayed in Stateplane Coordinate System  
California Zone 2 (feet)

Fuel Rank was taken from FRAP web site and represents moderate (yellow), high (orange), and very high (red) fuel rankings based on inputs such as fuel, slope, brush density, and tree density. See FRAP site for more details.

**DISCLAIMER**

THIS DEPICTION WAS COMPILED FROM UNVERIFIED PUBLIC AND PRIVATE SOURCES AND IS ILLUSTRATIVE ONLY. NO REPRESENTATION IS MADE AS TO ACCURACY OF THAT INFORMATION AND NONE MAY BE INFERRED. THEREFORE USERS MAKE USE TO THAT INFORMATION AT THEIR OWN RISK.

**NOTES:**

HILLSHADE LAYER MADE FROM NED DATA (USGS)  
LAYER INFORMATION MAY COVER ADDITIONAL AREAS OUTSIDE OF THE DISPLAYED AREA.  
PREPARED AT THE REQUEST OF VICKY YORTY, Date: 08/16/2004  
MAP PREPARED BY: LINDA WRIGHT, Date: 08/23/2004.  
G.I.S. PROJECT ID: 2688, RELATED REPORT:  
EL DORADO COUNTY SURVEYOR/G.I.S. DIVISION.  
PHONE (530)621-5871 FAX (530)626-8731