


## Using layered PDF files

### Introduction

PDF (portable document format) files have become familiar objects over the past few years. Their advantage over many other file formats is that they can be opened and viewed using free software, Adobe Acrobat Reader, which is widely available and easy to use.

Layered pdf files are pdf documents with an additional feature: they contain two or more layers within a single page. Layers are common in other graphics files, especially map documents, and provide the ability to overlay different sets of data, maps, images or annotations onto the same area.

### Loading and viewing

Open the PDF in Adobe Acrobat Reader and if the file is a layered PDF you should see in the left-hand side a layer icon.  You can click on the icon to see the various layers. You can click on the eye icon to turn the various layers on and off.

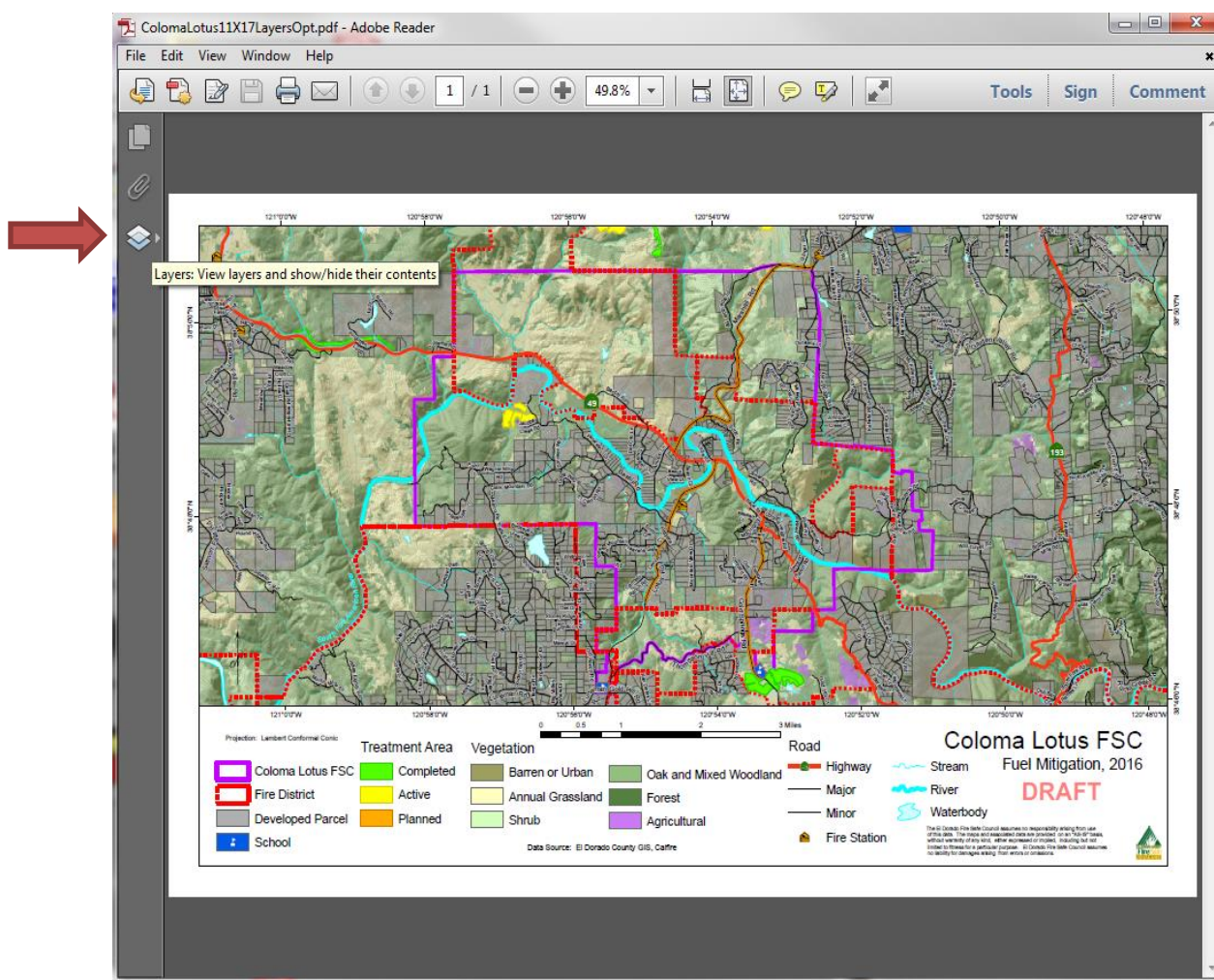
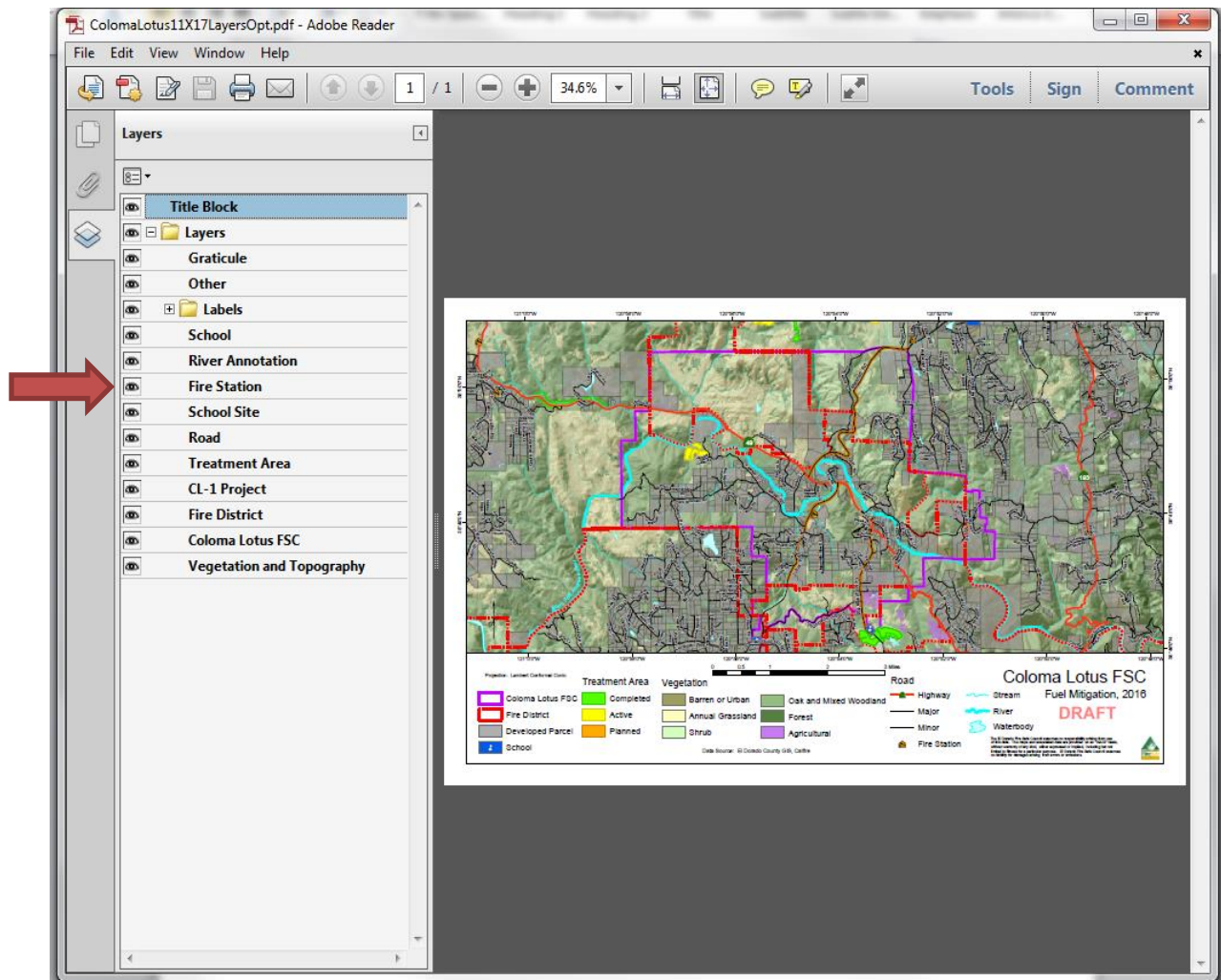


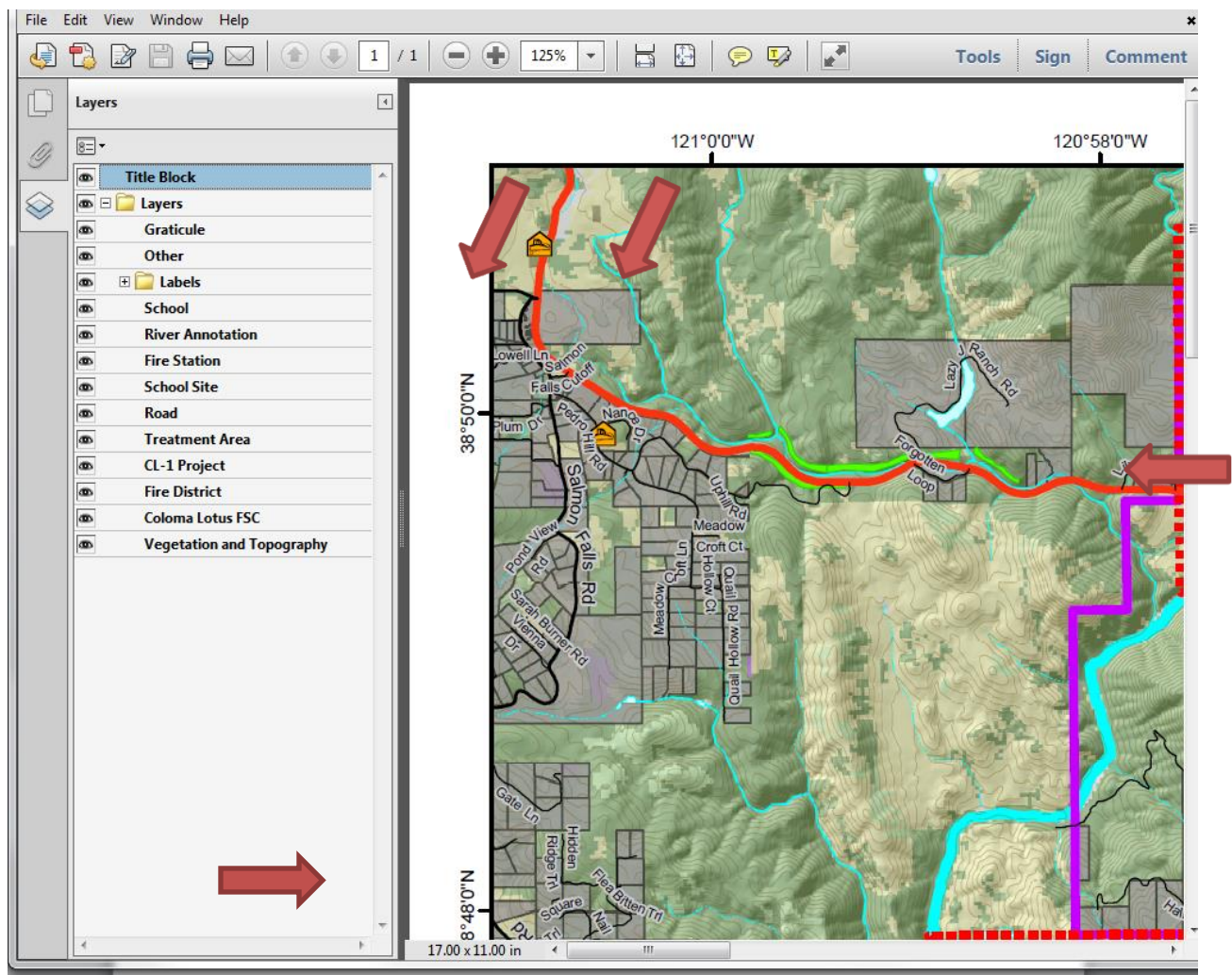
Figure 1



**Figure 2**

Depending on the shape of the pdf content, you may need to adjust various controls to view it properly. Any combination of the following may help:

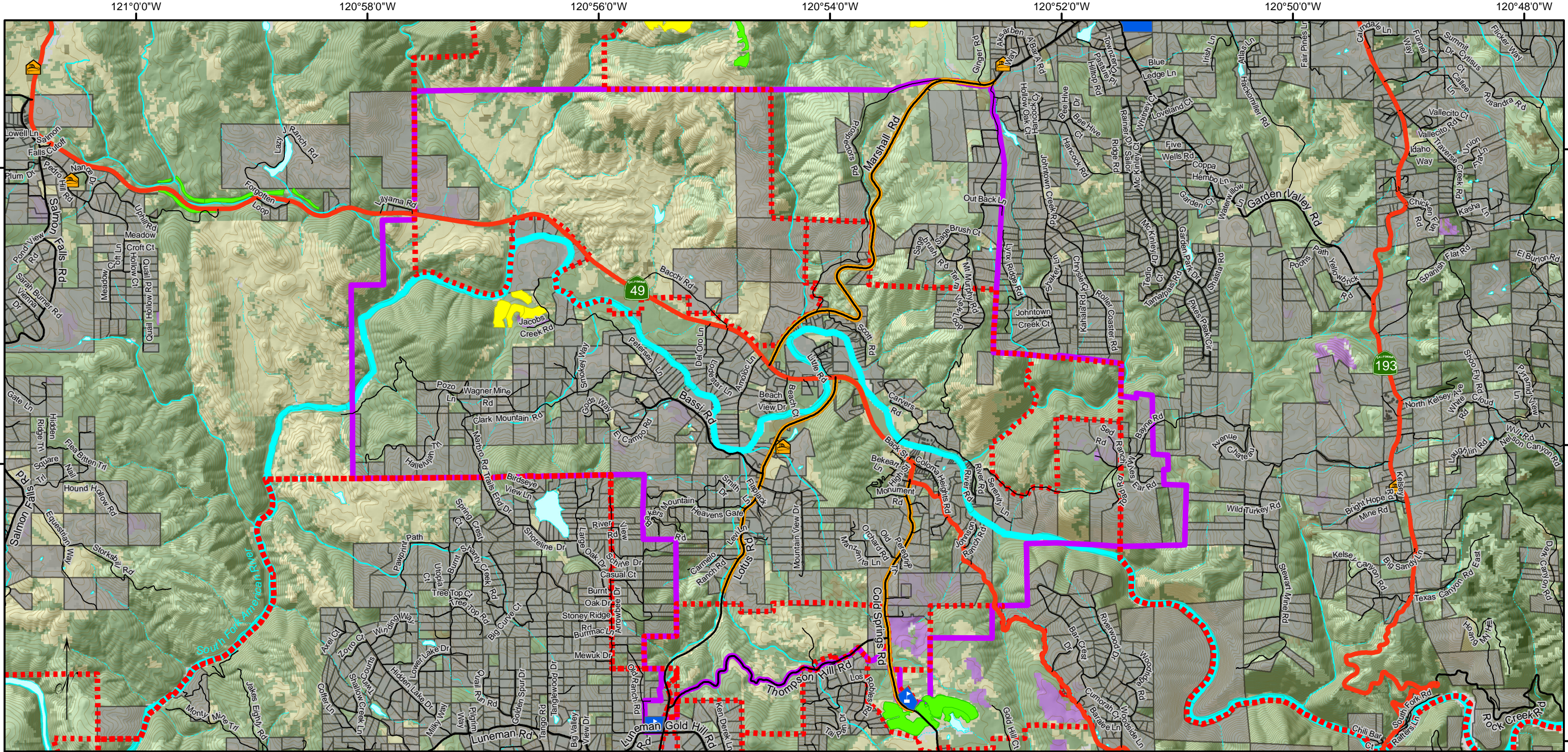
- Using the scroll bars on the overall browser window
- Adjusting the zoom level on the Acrobat Reader toolbar
- Adjusting the width of the Layers panel on the left hand side
- Using the 'grab hand' tool to move the map around within the Acrobat Reader window



**Figure 3**

In this example you can turn the title block off and on in addition the road labels and many other graphic layers. The vegetation, contours and hillshade are combined into one base layer called "Vegetation and Topography" which you may also turn on and off.





Projection: Lambert Conformal Conic



Treatment Area		Vegetation	
Coloma Lotus FSC	Completed	Barren or Urban	Oak and Mixed Woodland
Fire District	Active	Annual Grassland	Forest
Developed Parcel	Planned	Shrub	Agricultural
School			

Data Source: El Dorado County GIS, Calfire

Road	
Highway	Stream
Major	River
Minor	Waterbody
Fire Station	

# Coloma Lotus FSC

## Fuel Mitigation, 2016

### DRAFT

The El Dorado Fire Safe Council assumes no responsibility arising from use of this data. The maps and associated data are provided on an "AS-IS" basis, without warranty of any kind, either expressed or implied, including but not limited to fitness for a particular purpose. El Dorado Fire Safe Council assumes no liability for damages arising from errors or omissions.

