

Note:

1) All Emergency Exits are gated and not locked. Access is restricted to emergency situations only.

**RDS EMERGENCY EXIT MAP**





















Alida Street starts at the bridge

Turn left onto  
Alida Street  
after  
the bridge

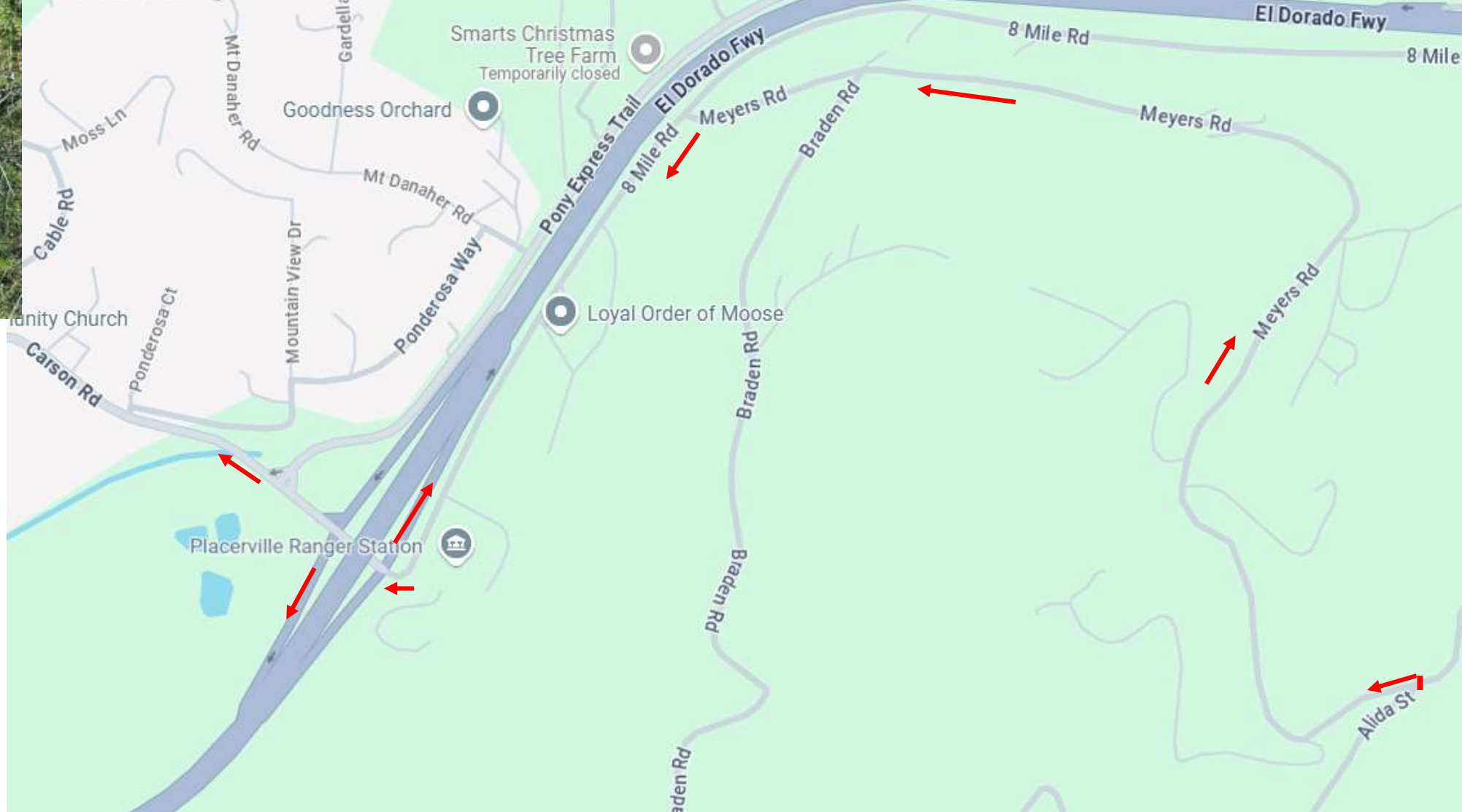












Turn left onto Meyers Road and follow it to left turn onto 8-Mile Road to either Carson Road or US 50E or 50W

## **Vita Grande Summary**

- NOT currently an official RDS Emergency Exit – coordinating with property owners for permission to use route as an Emergency Exit and permission to clear (weed whack) some areas
- No locks on top gate
- Roadway is steep with a slate rock bottom in a few places– not recommended for a low clearance 2WD car
- Will update RDSFSC Emergency Exit map & FSC website if permission to utilize as an official Emergency Exit is obtained
- Viable exit for Vita Grande residents if exit to Puerta Del Sol was blocked by fire